



Our Lady of Guadalupe

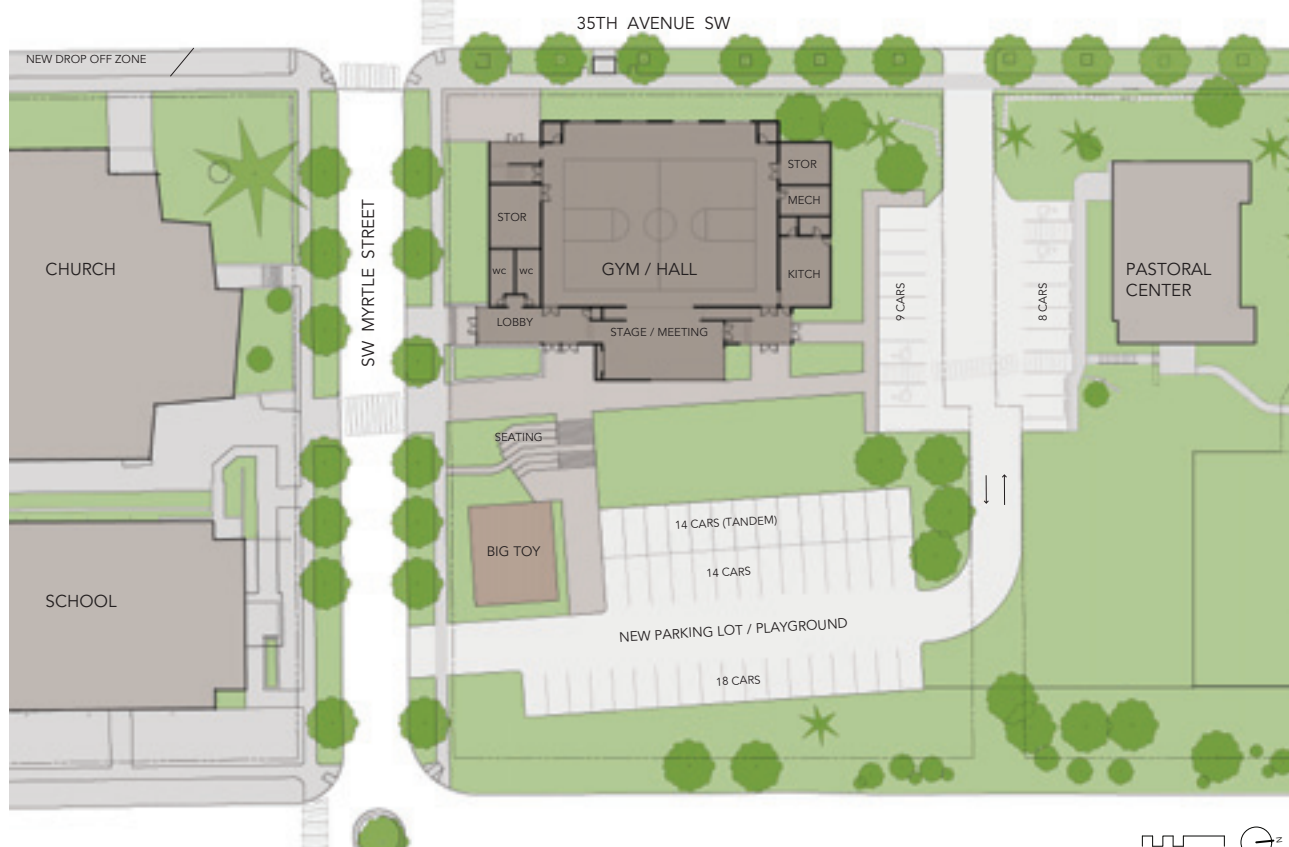
# Building FOR OUR Future

THE NEXT 50 YEARS CAMPAIGN



build strengthen join  
enrich grow  
fellowship play worship  
learn community

# A view toward the future



Our Lady of Guadalupe: Parish Life Center and Gymnasium Siteplan

M/G Architecture  
Project 0902

"Over many decades, extraordinary sacrifices have been made by Catholics throughout the Archdiocese to build the necessary facilities for past and present generations. Today, Our Lady of Guadalupe faces a similar task. Such challenges involve great sacrifice but also a calling to work together as a parish family united in the love of Christ."

**Most Reverend Alex J. Brunett**  
*Archbishop of Seattle*

# Life in Our Lady of Guadalupe parish is about to change... for all of us

**Building for Our Future: The Next 50 Years Campaign** is our opportunity to enrich parish life – and the life of the West Seattle community – for the next 50 years and beyond. By coming together to build a new Parish Life Center and Gym, we will not only create a vibrant place for all generations to grow in fellowship and faith, we will strengthen our entire community.

## A history of giving and grace

Since Our Lady of Guadalupe was founded in 1960, we have enjoyed the richness of God's blessings to build an active, diverse and committed parish community. In the mid-2000's, we set our future in motion by developing a Parish Master Plan encompassing:

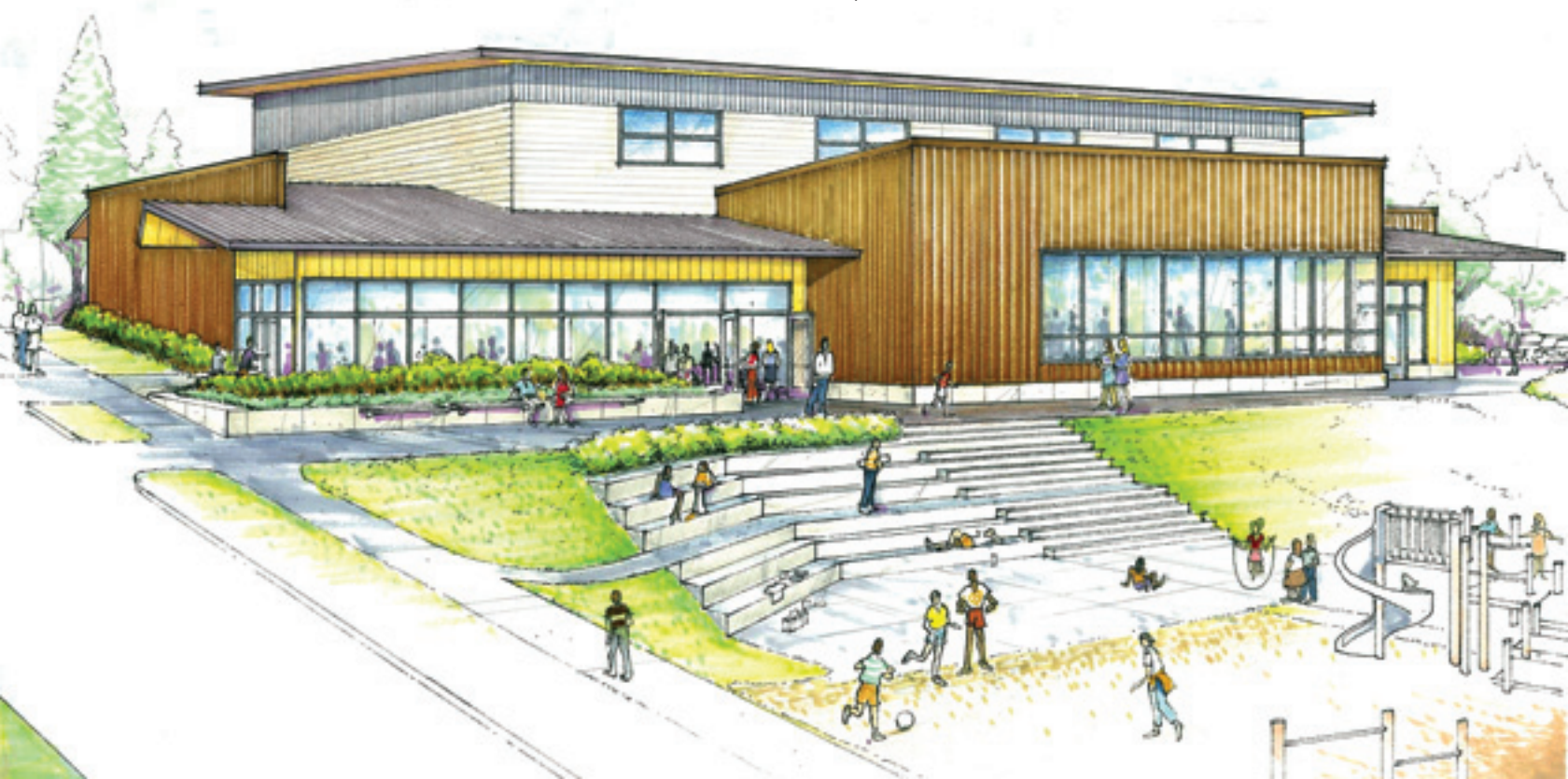
- A new Pastoral Center to provide a place for small meetings and receptions and to house our administrative offices
- A Parish Life Center/Gymnasium to serve as a hub of activity and Christian life for students, children, parents, singles, families, seniors and our entire community
- Modest improvements to make our Church warmer and more welcoming

Through God's grace and the generosity of our parish community, we raised \$2.4 million in 2007 toward a total Master Plan goal of approximately \$6.2 million. The first phase of fundraising allowed us to build the Pastoral Center and finalize architectural plans for the Parish Life Center/Gymnasium and church improvements. Now, we once again turn to our parish community to complete our campus and enrich lives for generations to come.

## A tangible legacy of our faith

The 10,000-square foot building will include beautiful spaces for large events, a full kitchen, outdoor play areas, and a bright and modern gymnasium. More than a meeting hall, more than a gym, the building will benefit every person in our parish while also allowing us to better serve the greater good of our entire community.

Should we raise all the funds needed to complete the Master Plan, tentative church improvement plans call for creating a more welcoming narthex, remodeling bathrooms, upgrading lighting and enhancing the exterior façade.



# Our faith and God's blessing will transform our community

"In Mark 11:24, Jesus said, 'Whatever you ask for in prayer, believe that you have received it, and it will be yours.' My strong belief that the **Building for Our Future Campaign** will succeed is grounded in my faith in God and my faith in our parish and its leaders. This is a transformational time for Our Lady of Guadalupe, a time for all of us to come together not just to build a building, but to build an even stronger community. With your faith and commitment, what we pray for will be accomplished."

**Father Jack Walmesley**



"Our family chose to join Our Lady of Guadalupe parish in 2000 because we loved its spirit, diversity and joy. Our two little girls go to school here, so the gym is important to us. But more than that, we are excited about what the campaign will do for everyone who is part of the OLG community – all the events and activities that will bring us even closer together as a parish. And, we know the new building also will allow us to serve the greater good, the disadvantaged and others in our community as well."

**Jim and Jennifer Southwell**  
*Campaign Co-Chairs,  
with daughters  
Jacqueline, 8,  
and Josephine, 5*

"We have been members of Our Lady of Guadalupe for more than two decades. Seeing it grow in faith and in numbers has been a blessing. We support the campaign because it is an opportunity to build a foundation for the future. We also look forward to actively using the new Parish Life Center. We hope everyone in our parish considers giving at a personally significant level to help us create the next 50 years for OLG."

**Mel and Sheila Dennis**  
*Campaign Co-Chairs*



## A glimpse at life in the Parish Life Center/Gymnasium

- Parish-wide celebrations
- Adult education classes
- Wedding receptions
- CYO sports activities
- Community meetings
- Funeral receptions
- Teen and adult sports
- Community service events
- School fundraisers
- Anniversary parties
- Plays and concerts

We want your ideas! Email us at [campaign@olgfuture.org](mailto:campaign@olgfuture.org)!

# There is no better time to build for our future

We have an amazing, growing and faithful parish alive with people who choose to belong here. Despite a challenging economy, weekly sacrificial giving and contributions to the school have increased this year. Parishioners are seeking God's guidance, acting on their values and faith, and choosing carefully where to donate their money... and they are choosing OLG. In addition, we have friends and supporters in the Archdiocese, in West Seattle and beyond who will join this campaign. And, we are well timed to take advantage of lower costs for construction materials.

## Why we need the Parish Life Center/Gymnasium

The parish has no suitable space to hold events and activities that can further unite and involve our parishioners and our community. We turn away an average of three parish-related activities a month because there is no place to hold them. We envision the new building as a place that hums nearly 'round the clock, every day of the week, every week of the year, with active, engaged people of all ages.

Today, our students walk two blocks for physical education classes to the High Point Community Center, which charges us \$5,000 a year in rental fees. A modern, on-site gymnasium will allow us to provide a better-rounded education to students while helping to attract new families to the OLG school. The gym also can be open to sports, recreational and social activities for teens and adults in our parish.

We also look forward to new ministries and service projects that can use the Parish Life Center to serve God and our community.

"Every individual, child and family in the parish will be able to find something in the new building to enrich their lives. The gym, stage and gathering hall will make a big difference in the physical education, sports and social programs our school community can enjoy."

**Kristin Dixon**  
*OLG School Principal*



# Your leadership will make this a reality

In the early days of this campaign, a few special leaders will step up to set us firmly on the path to success. **You can be one of these leaders.** Someone who knows the joy that comes with a gift given unselfishly, who has the generosity of spirit to share God's blessings in their lives with others, who is willing to exchange personal benefit for the greater good.



Your leadership gift is critical to establishing a foundation of early secured pledges that will inspire confidence as we broaden the campaign to the wider parish and West Seattle community later this year. By serving as a role model to others, your gift will multiply in value far beyond the actual dollars you donate.



"As each has received a gift, employ it in serving one another, as good managers of the grace of God..."

1 Peter 4:10

## Opportunities for giving

You can make an impact with a leadership gift that takes many different forms. For example:

- Members of a family may wish to consider pooling their donations to total \$250,000 to name the gathering hall, the gym or the stage after their family, (e.g., The Smith Gymnasium, The Gonzalez Gathering Hall or The Henry Brown Stage). This could be a very special legacy for a founding family of our parish.
- You can transfer or sell stock to make a donation.
- Multi-year pledges through automatic bank drafts or credit card payments can spread a leadership gift over three, four or five years.

Please read the materials in this folder or contact us for more information.

## How we will fund our future



\*Remaining from the 2007 campaign + outstanding pledges



Contact us with your questions and ideas or to learn more about making a leadership gift.

206.935.0358

campaign@olgfuture.org

www.olgfuture.org





7000 35th Avenue SW  
Seattle WA 98126  
206.935.0358

[campaign@olgfuture.org](mailto:campaign@olgfuture.org)  
[www.olgfuture.org](http://www.olgfuture.org)

### **CAMPAIGN LEADERSHIP**

**Father Jack Walmesley**, *Pastor*

**Dan Merlino**, *Parishioner, Campaign Director*  
[dan@olgfuture.org](mailto:dan@olgfuture.org)

**Mel and Sheila Dennis**, *Parishioners, Campaign Co-Chairs*

**Jim and Jennifer Southwell**, *Parishioners, Campaign Co-Chairs*

**Susie Stanley-Jones**, *Parishioner, Campaign Manager*  
[susie@olgfuture.org](mailto:susie@olgfuture.org)

**Kristin Dixon**, *OLG School Principal*

**Maryann Crissey**, *Parishioner and Chair,*  
*Parish Finance Council*

**Kathleen Sullivan**, *Parishioner*

**Frank Handler**, *OLG Administrator*

**John Baumann**, *OLG Director of Stewardship*

### **CAMPAIGN CONSULTANTS**

**Richard Glasman**, *MG Architecture*

**Teresa Moore**, *Moore Ink. PR & Fundraising Communications*

**David Owen Hastings**, *David Owen Hastings Design*

build strengthen join  
enrich grow  
fellowship play worship  
learn play worship  
community